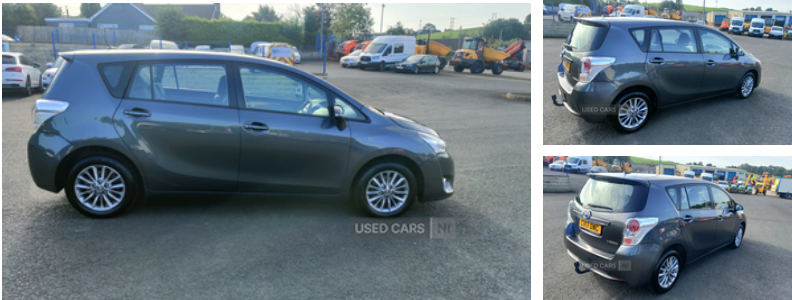


## Toyota Verso 1.6 V-matic Icon TSS 5dr | 2017

### FULL SERVICE HISTORY



Very well maintained from new, full service history, 2 keys, Ideal family 7 seater.

### Vehicle Features

2 individual folding 3rd row seats, 2 speed intermittent front wiper with mist function, 3 individual folding 2nd row seats, 3 rear height adjustable headrests, 3 spoke leather covered steering wheel, 6 speakers, 12V power point front/rear, 16" alloy wheels + locking wheelnuts, ABS+Electronic Brake force Distribution, Accessory socket front and rear, Active front headrests, Adjustable steering column, Air recirculation control, Ashtray and cigar lighter, Audio integrated fit with LCD, Auto high beam, Automatic instrument display dimmer, Autonomous emergency braking, Auxiliary input socket, Bluetooth phone integration system, Body colour bumpers, Body colour door handles, Bottle holders, Brake assist function, Central Storage Box, Chrome air vent surrounds, Chrome front fog light surround, Chrome front grille, Chrome rear garnish, Clean air filter, Cloth upholstery, Coat hooks, Collision mitigation braking system, Cooled glovebox, Cruise control, Cupholders in front and rear, DAB Digital radio, Digital clock, Door ajar warning, Driver's footrest, Driver/front passenger side airbags, Driver/passenger airbags with hybrid inflators, Driver/passenger front seatback pockets, Driver/passenger sunvisors with illuminated vanity mirrors + covers, Drivers knee airbag, Dual zone automatic air conditioning, Dusk sensitive headlamps, Dusk sensor, Electric power steering, Emergency brake assist, Five 3 point rear safety belts, Follow me home headlights, Forward collision warning, Front/centre/rear interior lights, Front/rear assist grips, Front/rear electric windows with one-touch/anti-trap and key-off function, Front and rear curtain airbags, Front and rear door pockets, Front armrest, Front fog lights, Front seatbelt pretensioners with force limiters, Fully carpeted luggage compartment, Green tinted glass, Heated/electric door mirrors with integrated indicators, Heated glass rear screen, Height/reach adjust steering wheel, Height adjustable driver's seat, Height adjustable front headrests, Height adjustable front seatbelts, Hidden under floor storage in boot, Hill assist control, Illuminated glovebox with

# £8,995

<b>Miles:</b>	66594
<b>Fuel Type:</b>	Petrol
<b>Transmission:</b>	Manual
<b>Colour:</b>	Grey
<b>Engine Size:</b>	1598
<b>CO2 Emission:</b>	154
<b>Tax Band:</b>	Petrol/Diesel (£195 p/a)
<b>Body Style:</b>	MPV
<b>Insurance group:</b>	10E
<b>Reg:</b>	CV17DWC

### Technical Specs

<b>DIMENSIONS</b>	
<b>Length:</b>	4460mm
<b>Width:</b>	1790mm
<b>Height:</b>	1630mm
<b>Seats:</b>	7
<b>Luggage Capacity (Seats Up):</b>	330L
<b>Gross Weight:</b>	2125KG
<b>Max. Loading Weight:</b>	695KG

<b>PERFORMANCE &amp; ECONOMY</b>	
<b>Fuel Consum. (Urban Cold):</b>	32.8MPG
<b>Fuel Consum. (Extra Urban):</b>	49.8MPG
<b>Fuel Consum. (Combined):</b>	41.5MPG
<b>Fuel Tank Capacity:</b>	60L
<b>Number Of Gears:</b>	6 SPEED
<b>Top Speed:</b>	115MPH
<b>Acceleration 0-100 km/h:</b>	11.7s
<b>Engine Power BHP:</b>	130.1BHP

lock, Isofix child seat attachment, Key in reminder, Lane departure warning system, Leather wrapped gear shift knob, Lights on warning, Luggage load hooks, Outside temperature display, Overhead console, Passenger airbag deactivate switch, Radio/single CD with MP3 and WMA compatability, RDS with PTY + EON setting, Rear armrest, Rear child proof door locks, Rear headrests, Rear removable tonneau cover, Rear spoiler, Rear wiper, Reclining/sliding front seat, Reclining 2nd row seats, Reclining 3rd row seats, Remote alarm with perimeter, Remote boot release, Remote central double locking, Remote courtesy light with delay, Remote fuel cap release, Retractable door mirrors, Retractable tonneau cover, Road sign information display, Roof mounted radio aerial, Sliding 2nd Row rear seats, Steering column lock, Steering wheel mounted audio controls, Storage under front passenger seat, Titanium effect fascia, Titanium effect interior door handles, Titanium effect steering wheel and centre consol, Touch 2 touchscreen + MP3 player/ipod connectivity + reversing camera, Transponder engine immobiliser, Trip computer with fuel consumption/average speed, Tyre pressure warning, Tyre repair kit, Under floor storage in 2nd row, Upper glovebox, USB port, Vehicle stability control + traction control + brake assist