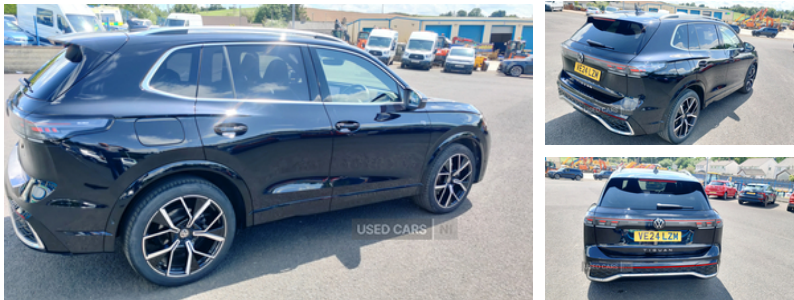




10-12 Carhill Rd Garvagh, Garvagh, BT51 5NJ
PATRICK: 02829558605 | MOBILE: 07967566132

Volkswagen Tiguan 2.0 TDI R-Line 5dr DSG | 2024

£34,995



Vehicle Features

3 bench rear seats in 2nd row, 3 point seat belt for centre rear seats, 3 Point seat belts in front with pretensioners, 3 point seatbelts in outer rear with ECE label, 12V outlet in center console rear and in luggage compartment, 12V socket in centre console, Airstop tyres, Ambient lighting with logo projection, Anti theft wheel bolts, Auto dimming interior rear view mirror, Automatic headlight control system, Black roof lining, Bluetooth mobile phone interface, Body coloured door handles, Brushed stainless steel pedals, Chrome moldings on the side windows, Coming/leaving home lighting function, Diversity antenna for FM reception, Door and side trim panel with leatherette insert, Door sill protectors, Driver and front passenger airbag with front passenger airbag deactivation, Dynamic road sign display, eCall emergency call service, Electronic parking brake with auto hold, Front and rear curtain airbags, Front centre airbag, Front centre armrest, Front disc brakes, Front integrated head restraints, Front wheel drive, Heated rear window, Heated windscreen washer jets, High level 3rd brake light, Interior door handle in matte chrome, Lane keeping system Lane Assist, Manual child proof rear door locks, Mechanical rear seat release, Multifunction front facing camera, Oncoming vehicle braking when turning including swerve support, Power adjustable lumbar support in front, Rain sensor windscreen wipers, Rear disc brakes, Rear fog light on one side, Rear side wing doors, Rear wiper, reversing light on both sides, Single front passenger seat, Start/stop system with regenerative braking, Sun visors with illuminated vanity mirrors, Three rear head restraints, Two tone horn, Warning signal and warning light for front and rear seatbelts not fastened, Warning triangle

| | |
|-------------------------|--------------------------|
| Miles: | 15366 |
| Fuel Type: | Diesel |
| Transmission: | Semi-Automatic |
| Colour: | Black |
| Engine Size: | 1968 |
| CO2 Emission: | 148 |
| Tax Band: | Petrol/Diesel (£195 p/a) |
| Body Style: | Sport utility vehicle |
| Insurance group: | 23E |
| Reg: | VE24LZM |

Technical Specs

| | |
|-------------------------------------|--------|
| DIMENSIONS | |
| Length: | 4539mm |
| Width: | 1859mm |
| Height: | 1660mm |
| Seats: | 5 |
| Luggage Capacity (Seats Up): | 652L |
| Gross Weight: | 2240KG |
| Max. Loading Weight: | 638KG |

| | |
|----------------------------------|----------|
| PERFORMANCE & ECONOMY | |
| Fuel Consum. (Combined): | 50.4MPG |
| Fuel Tank Capacity: | 55L |
| Number Of Gears: | 7 SPEED |
| Top Speed: | 129MPH |
| Acceleration 0-100 km/h: | 9.4s |
| Engine Power BHP: | 147.5BHP |